

Art T.¹, Detilleux J.², Balligand M.³, Barsacq S.⁴, Beaumont A.⁵, Bonnet MC.⁴, Canitrot E.⁶, Delguste C.³, Delvaux V.¹, Ehrmann C.⁷, Ewert M.⁸, François AC.⁹, Frequelin E.¹⁰, Gansser-Potts M.⁶, Gatez C.¹, Hody S.¹¹, Huber R.¹², Huels N.¹³, Jordan C.¹⁴, Keim D.¹³, Kruse C.¹, Lesca H.¹⁰, Leurette-Merlo C.⁴, Leuthard F.¹⁵, Mona HA.¹³, Moore L.¹⁴, Parrilla-Hernandez S.¹, Pavulraj S.⁸, Pirottin D.¹⁶, Schwartz C.¹⁷, Tosi I.¹, Vandeput S.¹⁸, Zeppenfeld J.⁷, Votion D.³



¹ Cemespo, Comparative veterinary Medicine, FARAH, ULiège, Belgium; ² Génétique quantitative, Sustainable livestock production, FARAH, ULiège, Belgium; ³ Comparative veterinary Medicine, FARAH, ULiège, Belgium; ⁴ Oniris Nantes, Loire Atlantique, France; ⁵ École Nationale Vétérinaire d'Alfort, Maisons-Alfort, France; ⁶ École Nationale Vétérinaire de Toulouse, Toulouse, France; ⁷ Fachbereich Veterinärmedizin, Justus-Liebig-Universität Giessen, Giessen, Germany; ⁸ Fachbereich Veterinärmedizin, Freie Universität Berlin, Berlin, Germany; ⁹ Pharmacologie-Toxicologie, Comparative veterinary Medicine, FARAH, ULiège, Belgium; ¹⁰ VetAgro Sup Lyon, Marcy L'étoile, France; ¹¹ Département des Sciences de la Motricité, Service de Physiologie de l'Effort Physique, ULiège, Belgium; ¹² Tierärztliche Fakultät, Ludwig-Maximilian-Universität München, München, Germany; ¹³ Stiftung Tierärztliche Hochschule Hannover, Hanover, Germany; ¹⁴ Veterinärmedizinische Universität Wien, Vienna, Austria; ¹⁵ Vetsuisse Fakultät, Universitäten Zürich und Bern, Bern, Switzerland; ¹⁶ GIGA, ULiège, Belgium; ¹⁷ Laboratoire d'Analyse du Mouvement Humain, ULiège, Sart-Tilman (Liège), Belgium; ¹⁸ Bibliothèque des Sciences de la Vie, ULiège, Sart-Tilman (Liège), Belgium

Introduction

Measurement of maximal oxygen uptake ($\dot{V}O_{2max}$) is considered to be the gold standard (GS) to determine aerobic capacity in human (Evans *et al.*, 2015). Determination of $\dot{V}O_{2max}$ requires a costly equipment and a high intensity exercise that may not be performed easily in untrained individuals and/ or with health concerns. Several tests have been designed to predict $\dot{V}O_{2max}$ in human in order to reduce risk, costs and other drawbacks linked to the direct measurement of $\dot{V}O_{2max}$. Among them, the one-mile track walk test (1 mile-WT; Kline *et al.*, 1987) is a simple test that does not require specialized equipment. In addition, a non-exercise based-equation model (NE-BEM; Jurca *et al.*, 2005) has been proposed to estimate $\dot{V}O_{2max}$ in healthy individuals. This study tests the validity of the 1 mile-WT and NE-BEM to estimate $\dot{V}O_{2max}$ in a group of healthy adults.

Materials and Methods

Prior to testing, all 12 participants (men, 2; women, 10) completed a written informed consent form. They performed a maximal graded exercise test on a treadmill up to exhaustion with the expired air of the individual undergoing analysis for O_2 content using the Cosmed K4b² (COSMED, Rome, Italy; Fig. 1). The test began at a speed of at 7 km/h (no incline) for 5 minutes to be increased by 2 km/h every 3 minutes.



Figure 1: maximal graded exercise test on treadmill



Figure 2: participants walking one-mile as fast as possible

For the 1 mile-WT, participants were instructed to perform a one-mile walk as fast as possible (Fig. 2). The time to perform the walk was included in an equation to predict $\dot{V}O_{2max}$ taking into account individual characteristics and final heart rate (HR). The NE-BEM estimates $\dot{V}O_{2max}$ based on a calculation including gender, age, body mass index, resting HR, and self-reported physical activity (Fig.3).



Figure 3: self-reported physical activity does not require an exercise test

Six statistical methods, with different assumptions, were used to estimate the level of agreement between measured and estimated $\dot{V}O_{2max}$ values. Bland-Altman plots were also constructed.

Results

The mean (\pm SD) $\dot{V}O_{2max}$ was 41.2 ± 4.1 with the GS vs. 44.6 ± 5.4 and 34.7 ± 5.1 $mL \cdot kg^{-1} \cdot min^{-1}$ as estimated by the 1 mile-WT and the NE-BEM, respectively. There was no agreement between the different tests (Fig. 4).

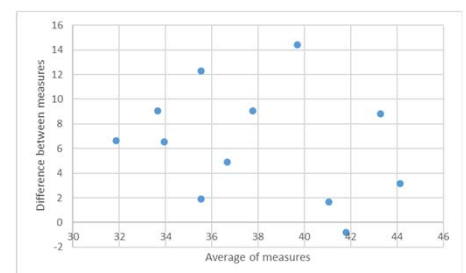


Figure 4: plot of differences between gold values and values estimated by Jurca *et al.*, 2005 equation versus the mean of both values

Conclusion

The estimation of $\dot{V}O_{2max}$ in a group of non-homogenous individuals (variety of race, gender, age and BMI) was not valid using the prediction equations referenced in the literature highlighting the need to validate a model specific to the test modality.

Bibliography:

Evans, H. J., et al. (2015). "A systematic review of methods to predict maximal oxygen uptake from submaximal, open circuit spirometry in healthy adults." *J Sci Med Sport* 18(2): 183-188.
 Jurca, R. A. S., et al. (2005). "Assessing cardiorespiratory fitness without performing exercise testing." *Am J Prev Med* 29(3): 185-193.
 Kline, G. M. et al., (1987). "Estimation of $\dot{V}O_{2max}$ from a one-mile track walk, gender, age, and body weight." *Med Sci Sports Exerc* 19(3): 253-259.